



# Specifications

COW CARTS 20 Bay



Designed with the aid of IT Professionals and Educators

## Maneuverability



1 1/4" Stainless Steel Handle

## Industrial Strength



Industrial 5" Casters

## Security



Locking Reinforced Steel Doors

## Convenience



Two Cord Wraps

## Network Connections



Connecting Cart to Network

## Venting System



Vents keep Laptops within Operating Temp



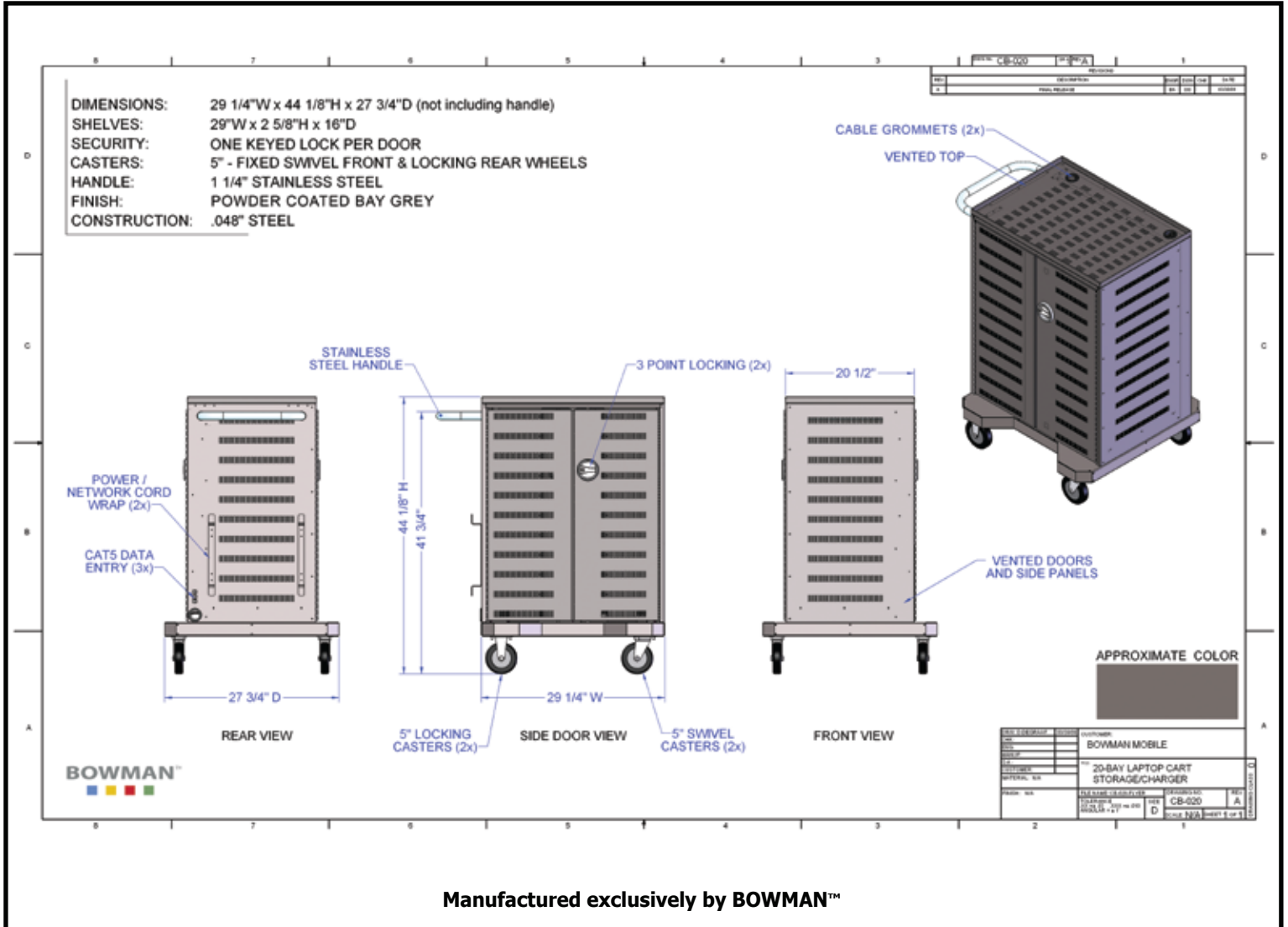
**Laptop Storage Compartment**  
**Bottom Router Shelf**



**IT Compartment**  
**Network Wiring - Power Bricks - Power Management**

\*Network Wiring is available as an Option

# COW CARTS 20 Unit Mobile Laptop Storage Carts



**BOWMAN™**  
 17301 51<sup>ST</sup> Ave NE  
 Arlington, WA 98223

800 962-4660  
 www.CowCarts.com



**Mobile Laptop Storage Carts**